



5826 S Jebel Way
Centennial, CO 80015
COMMUNITY: Park View Commons

MLS # 4352007
PRICE \$500,000



Single Family



1793 SQFT



3 Beds



2/1 Baths



2 Car



0.14 Acre

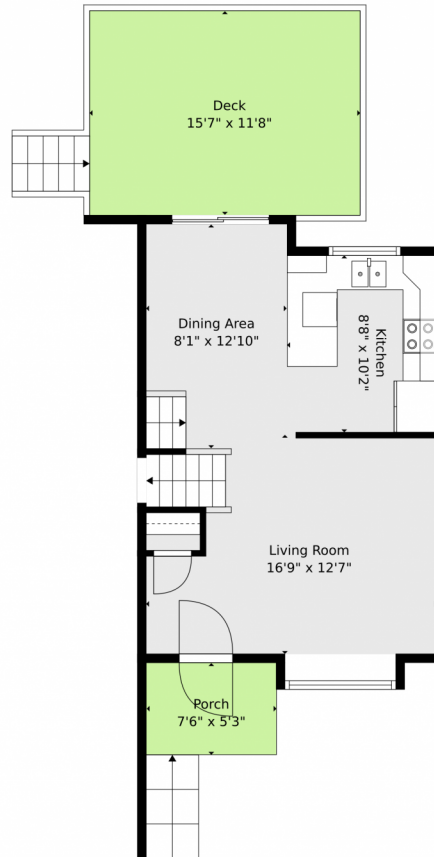


Tatyana Sturm
720-350-5909
tatyana@exitrealtydtc.com
<https://thestorckteam.com>



Scan code
for more
property
details





TOTAL: 1334 sq. ft
BELOW GROUND: 0 sq. ft, FLOOR 2: 339 sq. ft, FLOOR 3: 398 sq. ft, FLOOR 4: 597 sq. ft
EXCLUDED AREAS: BASEMENT: 384 sq. ft, GARAGE: 417 sq. ft, FIREPLACE: 13 sq. ft,
PORCH: 40 sq. ft, DECK: 183 sq. ft, BAY WINDOW: 11 sq. ft

Floor Plan Created By V1photos.com, Measurements Deamed Highly Reliable But Not Guaranteed.



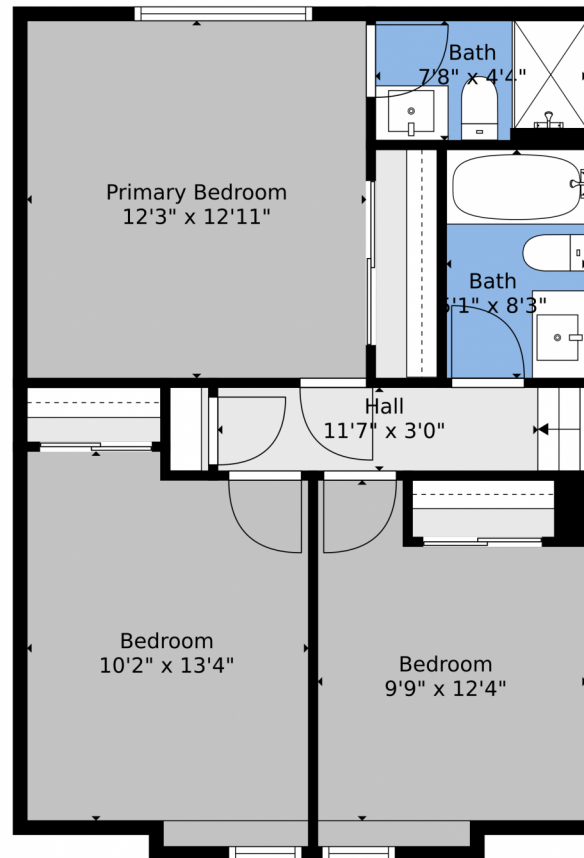
Disclaimer: Sizes and Dimensions are Approximate, Actual May Vary.



Tatyana Sturm
720-350-5909
tatyana@exitrealtydtc.com
<https://thestorckteam.com>



5826 S Jebel Way, Centennial, CO 80015 — 2nd Level



TOTAL: 1334 sq. ft

BELOW GROUND: 0 sq. ft, FLOOR 2: 339 sq. ft, FLOOR 3: 398 sq. ft, FLOOR 4: 597 sq. ft
EXCLUDED AREAS: BASEMENT: 384 sq. ft, GARAGE: 417 sq. ft, FIREPLACE: 13 sq. ft,
PORCH: 40 sq. ft, DECK: 183 sq. ft, BAY WINDOW: 11 sq. ft

Floor Plan Created By V1photos.com, Measurements Deamed Highly Reliable But Not Guaranteed.



Disclaimer: Sizes and Dimensions are Approximate, Actual May Vary.



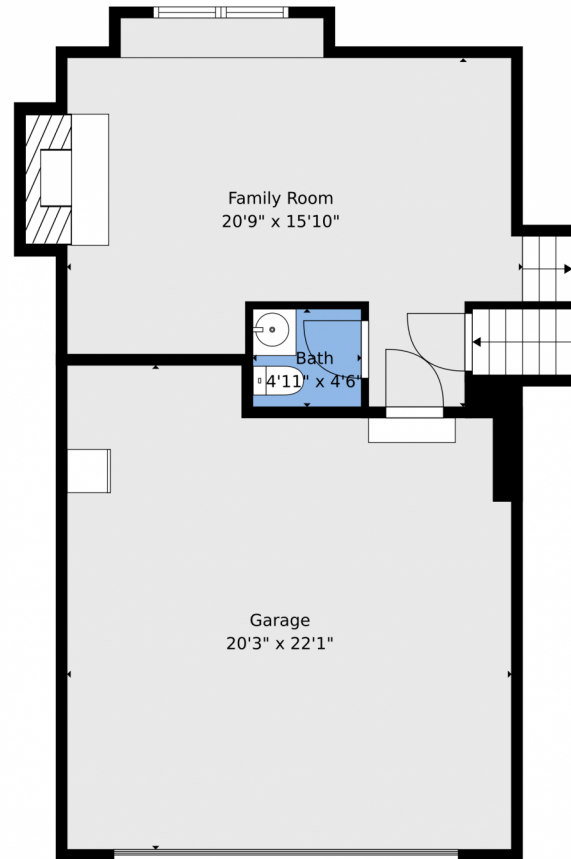
Tatyana Sturm
720-350-5909
tatyana@exitrealtydtc.com
<https://thestorckteam.com>



Scan code
for more
property
details



5826 S Jebel Way, Centennial, CO 80015 — Lower Level



TOTAL: 1334 sq. ft
BELOW GROUND: 0 sq. ft, FLOOR 2: 339 sq. ft, FLOOR 3: 398 sq. ft, FLOOR 4: 597 sq. ft
EXCLUDED AREAS: BASEMENT: 384 sq. ft, GARAGE: 417 sq. ft, FIREPLACE: 13 sq. ft,
PORCH: 40 sq. ft, DECK: 183 sq. ft, BAY WINDOW: 11 sq. ft

Floor Plan Created By V1photos.com, Measurements Deamed Highly Reliable But Not Guaranteed.

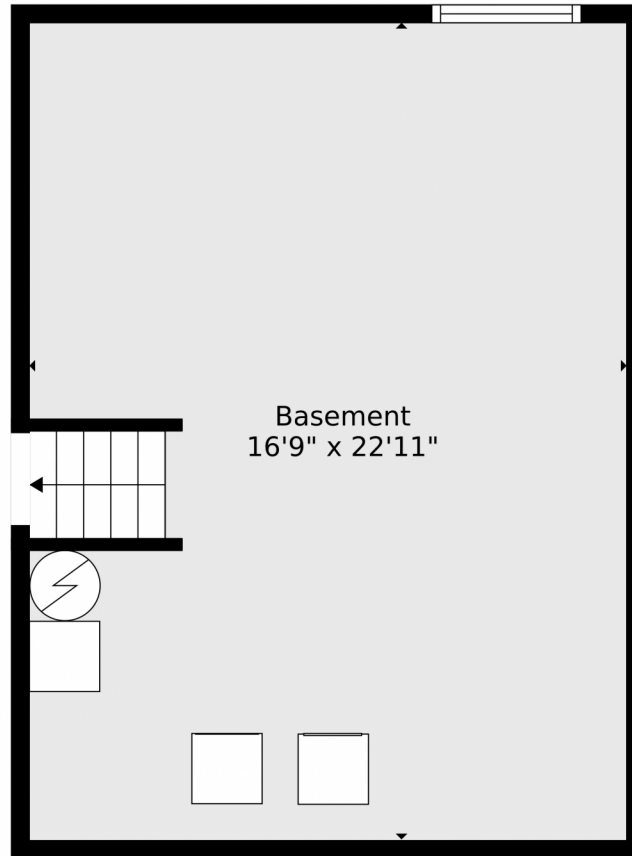


Disclaimer: Sizes and Dimensions are Approximate, Actual May Vary.



Tatyana Sturm
720-350-5909
tatyana@exitrealtydtc.com
<https://thestorckteam.com>





TOTAL: 1334 sq. ft
BELOW GROUND: 0 sq. ft, FLOOR 2: 339 sq. ft, FLOOR 3: 398 sq. ft, FLOOR 4: 597 sq. ft
EXCLUDED AREAS: BASEMENT: 384 sq. ft, GARAGE: 417 sq. ft, FIREPLACE: 13 sq. ft,
PORCH: 40 sq. ft, DECK: 183 sq. ft, BAY WINDOW: 11 sq. ft

Floor Plan Created By V1photos.com, Measurements Deamed Highly Reliable But Not Guaranteed.



Disclaimer: Sizes and Dimensions are Approximate, Actual May Vary.



Tatyana Sturm
720-350-5909
tatyana@exitrealtydtc.com
<https://thestorckteam.com>



Scan code
for more
property
details



5826 S Jebel Way, Centennial, CO 80015 — All Levels



TOTAL: 1334 sq. ft
BELOW GROUND: 0 sq. ft, FLOOR 2: 339 sq. ft, FLOOR 3: 398 sq. ft, FLOOR 4: 597 sq. ft
EXCLUDED AREAS: BASEMENT: 384 sq. ft, GARAGE: 417 sq. ft, FIREPLACE: 13 sq. ft,
PORCH: 40 sq. ft, DECK: 183 sq. ft, BAY WINDOW: 11 sq. ft

Floor Plan Created By V1photos.com, Measurements Deamed Highly Reliable But Not Guaranteed.



Disclaimer: Sizes and Dimensions are Approximate, Actual May Vary.



Tatyana Sturm
720-350-5909
tatyana@exitrealtydtc.com
<https://thestorckteam.com>



Scan code
for more
property
details

