



7731 Mountain Laurel Drive  
 Colorado Springs, CO 80922  
 COMMUNITY: Eastview Estates

MLS # 8879173  
 PRICE \$470,000



Single Family



2156 SQFT



3 Beds



3/1 Baths



2 Car



0.13 Acre

## PROPERTY DETAILS

Great Location. Welcome to your new home in Eastview Estates, Colorado Springs. This 3-bedroom, 4-bathroom home offers comfort and style. The main level features an open kitchen with a breakfast bar, perfect for dining and entertaining. Enjoy mountain views from the back porch. The primary bedroom has a walk-in closet and private bathroom. The basement has heated floors and can be used as a bedroom, home gym, or office. There is also a laundry area and full bath. Experience the best of Eastview Estates living in this stunning home.

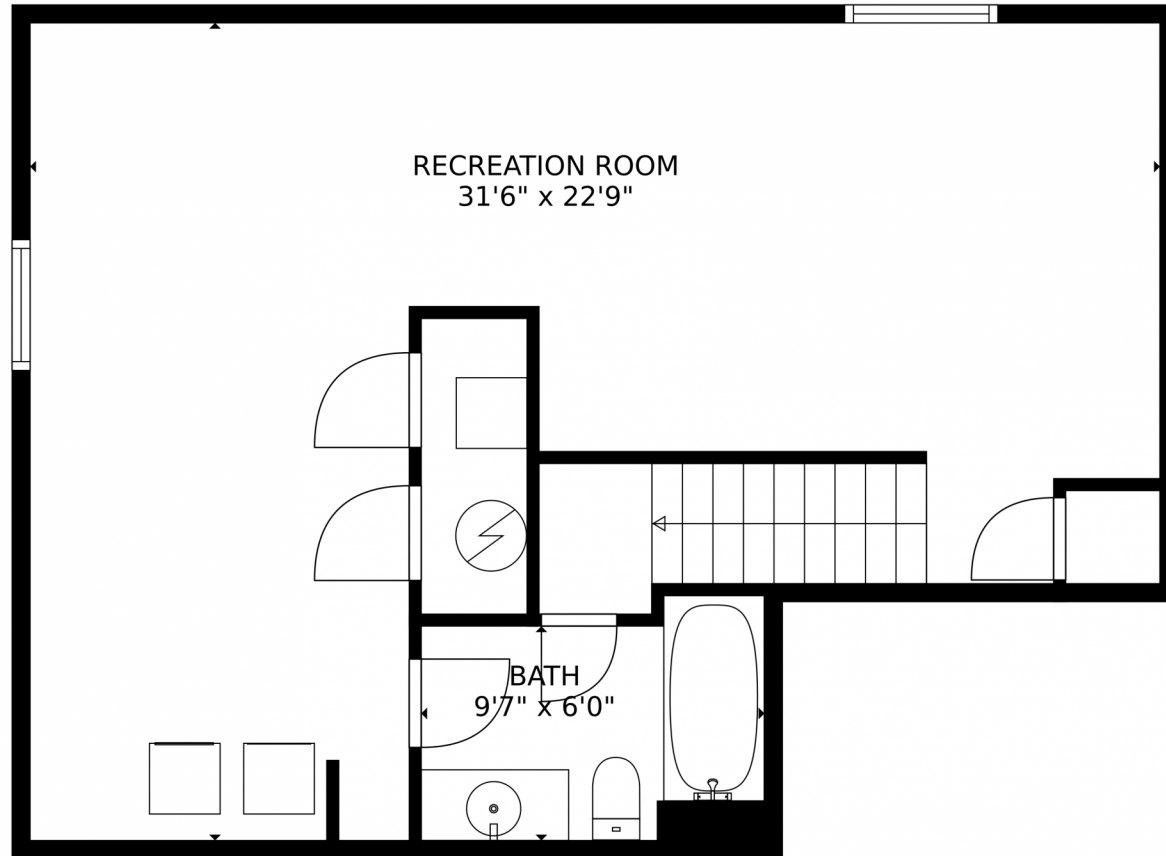


**Amy J Garcia**  
 719-216-8224  
 ajgarciaarea@gmail.com



Scan code  
 for more  
 property  
 details





**TOTAL: 2054 sq. ft**  
Below Ground: 638 sq. ft, FLOOR 2: 669 sq. ft, FLOOR 3: 747 sq. ft  
EXCLUDED AREAS: GARAGE: 411 sq. ft, OPEN TO BELOW: 222 sq. ft  
MEASUREMENTS CALCULATED BY V1Photos.com ARE DEEMED HIGHLY RELIABLE BUT NOT GUARANTEED.

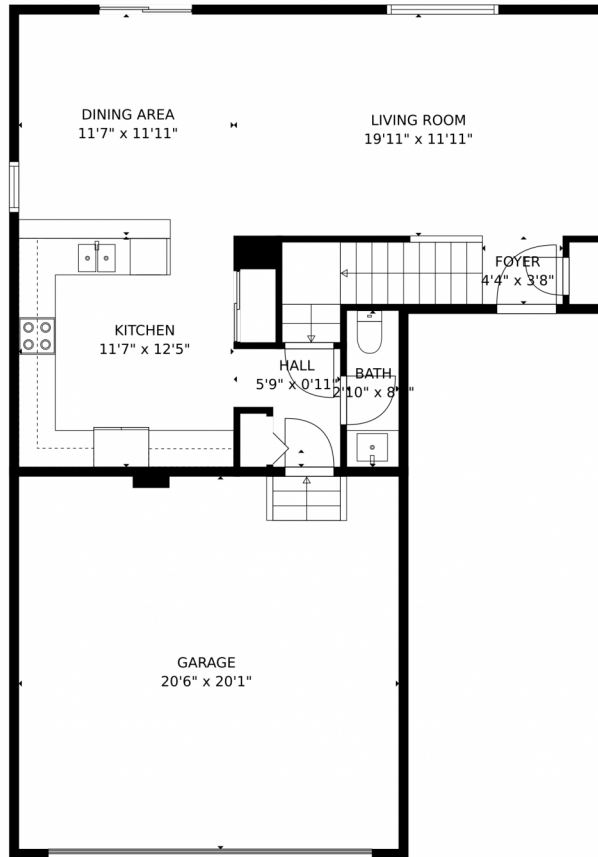


Disclaimer: Sizes and Dimensions are Approximate, Actual May Vary.



**Amy J Garcia**  
719-216-8224  
ajgarciaarea@gmail.com





**TOTAL: 2054 sq. ft**  
Below Ground: 638 sq. ft, FLOOR 2: 669 sq. ft, FLOOR 3: 747 sq. ft  
EXCLUDED AREAS: GARAGE: 411 sq. ft, OPEN TO BELOW: 222 sq. ft  
MEASUREMENTS CALCULATED BY V1Photos.com ARE DEEMED HIGHLY RELIABLE BUT NOT GUARANTEED.



Disclaimer: Sizes and Dimensions are Approximate, Actual May Vary.



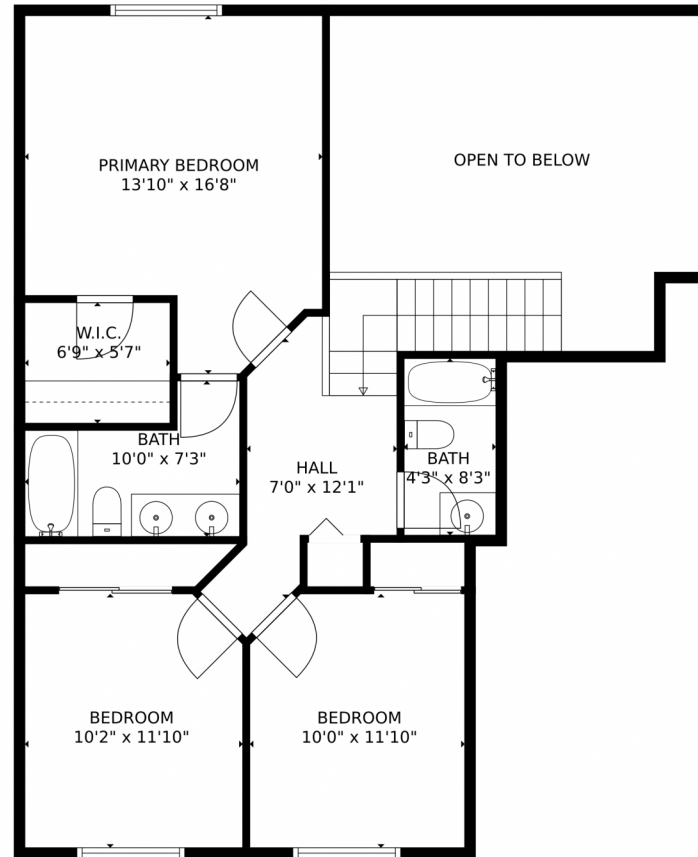
**Amy J Garcia**  
719-216-8224  
ajgarciaarea@gmail.com



Scan code  
for more  
property  
details







**TOTAL: 2054 sq. ft**  
Below Ground: 638 sq. ft, FLOOR 2: 669 sq. ft, FLOOR 3: 747 sq. ft  
EXCLUDED AREAS: GARAGE: 411 sq. ft, OPEN TO BELOW: 222 sq. ft  
MEASUREMENTS CALCULATED BY V1Photos.com ARE DEEMED HIGHLY RELIABLE BUT NOT GUARANTEED.



Disclaimer: Sizes and Dimensions are Approximate, Actual May Vary.



**Amy J Garcia**  
719-216-8224  
ajgarciaarea@gmail.com



# 7731 Mountain Laurel Drive, Colorado Springs, CO 80922 — floorplan\_all\_0



**TOTAL: 2054 sq. ft**  
Below Ground: 638 sq. ft, FLOOR 2: 669 sq. ft, FLOOR 3: 747 sq. ft  
EXCLUDED AREAS: GARAGE: 411 sq. ft, OPEN TO BELOW: 222 sq. ft  
MEASUREMENTS CALCULATED BY V1Photos.com ARE DEEMED HIGHLY RELIABLE BUT NOT GUARANTEED.



Disclaimer: Sizes and Dimensions are Approximate, Actual May Vary.



**Amy J Garcia**  
719-216-8224  
ajgarciaarea@gmail.com

